

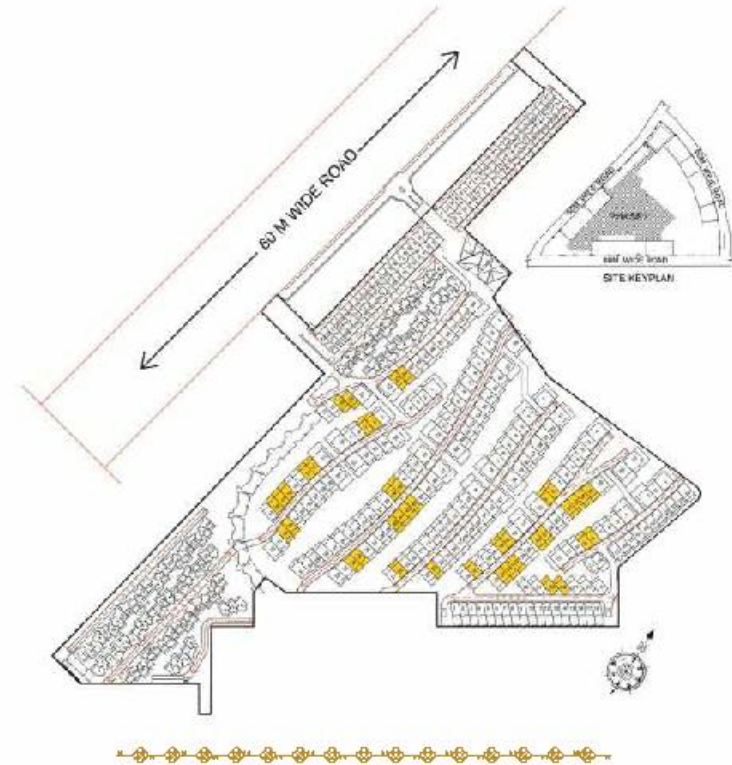
KEY PLAN

Name of Villa	Color	Location		Plot Size (In Sq.Yd.)	Carpet Area Exclusive Area of Basement (Including Parking Area) (In Sq.Ft.)	Built-up Area (In Sq.Ft.)	Exclusive Garden + Terrace Area (In Sq.Ft.)	Total Area of Unit (In Sq.Ft.) (C+D/2)
		Street	Villa Number					
Type 5	Yellow	ST - 06	19,20,23,24	212	3790	4635	1340	5395
		ST - 07	06,07,12,13,16,17,18,22,23					
		ST - 08	18,19,34,35,40,41,42,43					
		ST - 09	20,23					
		ST - 10	08,09,13,14,18,21,22,23,26,27 31,32,33,34					
		ST - 11	22,23					
		ST - 12	08,09					



TYPE-5 LEISURE GOLF VILLAS

YOUR HEAVENLY ABODE ENCLOSED BY
GRANDEUR AND GREENS





Descriptions

- The Villa has 4 levels with the following key features :
4 bedroom with attached dresser & toilet including a junior master bedroom and a master bedroom with master toilet & dresser, living & dining, kitchen with kitchen yard, powder room, private lawn, 2 car parking, lift, AV room/multipurpose hall, puja area, pantry, open-to-sky private pool, 1 utility, 2 maid's room & toilet, semi covered Balinese style spa bed, show kitchen, creative loft, store & toilet.

Upper Ground Floor

- Golf cart movement in the entire 90 acres enable safety for pedestrians with no vehicular movement on the ground floor, so that the kids & the elderly can roam around safely
- Resort like entrance foyer with a view of the golf course through 570 sq.ft. of living room which has a 13 ft. high & 30 ft. wide floor flushed glazing facing the golf course
- 210 sq. ft. of elevated private garden stepping down through the landscaped staircase to your 355 sq.ft. of private pool and garden
- 100 sq.ft. kitchen with 90 sq.ft. of show kitchen & a separate kitchen yard
- As the luxury adds up, you also have framed wider views towards the golf course & the provision of private lift

Lower Ground Floor - Bachelor's Pad

- Splash your face in the mornings with the sparkling water in your open-to-sky swimming pool which is beside your 185 sq.ft. bedroom
- Enjoy a movie in your private 245 sq.ft. AV room with a view of your private pool & the golf course
- Private parking space for two cars inside your own plot line
- Proper maid's room with a big utility, flexible for other services also



First Floor - The Junior's Domain

- Get amazed with a floating floor, set backed 1m from the ground floor profile
- The morning sunlight wakes you up in your 200 sq.ft. colossal junior master bedroom with a view towards the golf course from a glazing flushed till floor
- The greens virtually enters the master toilet & the bathing area through the 1m offset on the floor
- The 165 sq.ft. bedrooms has a walk-in wardrobe with a floor flushed glazing offering a direct view of the golf course from your bed

Second Floor - The Master's Domain

- The morning sunlight wakes you up in your 200 sq.ft. colossal junior master bedroom with a view towards the golf course from a floor flushed glazing
- The greens virtually enters the master toilet & the shower area has a view of the greens
- The 165 sq.ft. bedrooms has a walk-in wardrobe with a floor flushed glazing offering a direct view of the golf course from your bed

The Terrace You'll Love To Spend Time On

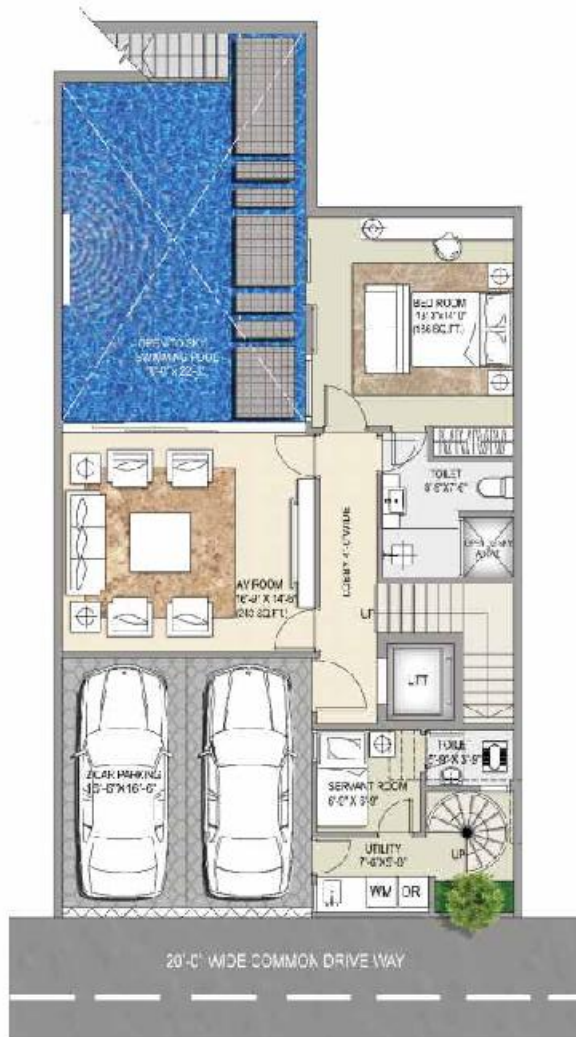
- The lift takes you to the creative loft on the terrace which has a 15 ft. high extraordinary framed view
- Enhance the creativity of your junior guitarist, the Kathak dancer in your house or the wonderful writer within you
- Terraces are unique with Balinese style spa bed on the roof top which is also convertible into performance platform in case of a small gathering
- Proper chef's show kitchen along with a toilet planned purposely, to be used during a gathering or party
- The terrace has a store for keeping the soft furnishing safely
- Pergolas shade the terrace, making the elevations dynamic & adding a vibrant look & feel by playful sun movement through out the day



R I S E R E S O R T R E S I D E N C E S



LOWER GROUND FLOOR



UPPER GROUND FLOOR

FIRST FLOOR



SECOND FLOOR



TERRACE FLOOR



ROOF FLOOR

