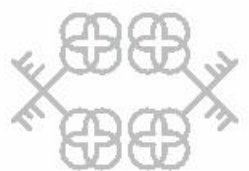


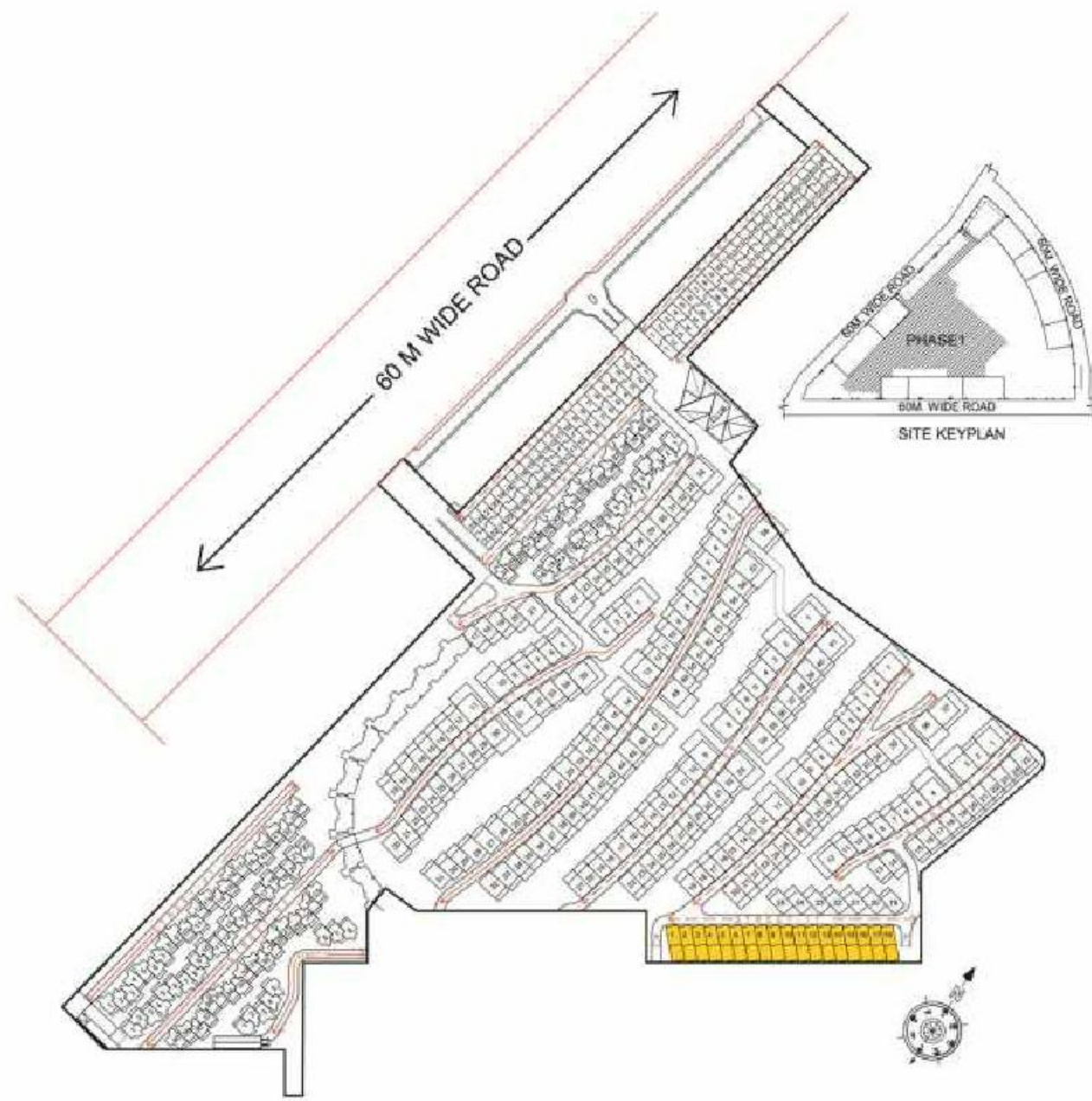
KEY PLAN

Name of Villa	Color	Location		Plot Size (In Sq.Yd.)	Carpet Area Exclusive Area of Basement (Including Parking Area) (In Sq.Ft.)	Built-up Area (In Sq.Ft.)	Exclusive Garden + Terrace Area (In Sq.Ft.)	Total Area of Unit (In Sq.Ft.)
		Street	Villa Number					
Type 3	Yellow	ST - 11	01 to 18	A	B	C	D	(C+D/2)
				143	2670	3305	1810	4210



TYPE-3 SPORTS VILLAS

LOCATED NEAR THE SPORT ZONES,
URGES YOU TO LIVE A HEALTHY LIFE





Descriptions

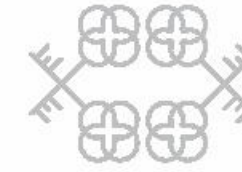
- **The Villa has 3 levels with terrace with the following key features:**
4 bedrooms with attached dresser & toilet including 1 master bedroom with master toilet & dresser, living & dining, kitchen, 2 car parking, party / multipurpose hall , covered private pool, 1 utility, maid's room & toilet, semi covered Balinese style spa bed, show kitchen, store & powder room

Upper Ground Floor

- Golf cart movement in the entire 90 acres enables safety for pedestrians with no vehicular movement on the ground floor, so that the kids & the elderly can roam around safely
- Beautiful concept of double height void in a 350 sq.ft. living & dining with the skylight at the top, allowing ample amount of light & ventilation in the living area
- The deck of the living room opens towards a 870 sq.ft. of rear garden overlooking your private swimming pool in the lower ground floor
- 80 sq.ft. of independent kitchen with unique connectivity to the maid's room & the utility on the lower ground floor

Lower Ground Floor - Bachelor's Pad

- A unique bachelor's pad with a spacious 165 sq.ft. bedroom & a 170 sq.ft. party hall overlooking your own private pool which is partially open to sky, with a deck & connectivity to the ground floor
- Private parking space for two cars inside your own plot line
- Proper maid's room with a big utility with separate entrance, has a multipurpose use for other services also



First Floor - The Private Domain

- The private domain enables visual connectivity to the lower floor through the double height void, keeping privacy & convenience at its best
- Enjoyable view of the garden through the light well – a double height void with a skylight above
- A 200 sq.ft. master bedroom floats in the light well with slit openings, which also has a beautiful terrace that opens into the garden
- All the bedrooms open into a 870 sq.ft. landscaped garden

The Terrace You'll Love To Spend Time On

- Unique terrace with Balinese style spa bed on the roof top which is also convertible into performance platform in case of a small gathering
- Proper chef's show kitchen along with a powder room planned purposely, to be used during a gathering or party
- Store on the terrace to keep soft furnishing safely in case of rain
- Pergolas shade the terrace, making the elevations dynamic & adding a vibrant look & feel by playful sun movement through out the day



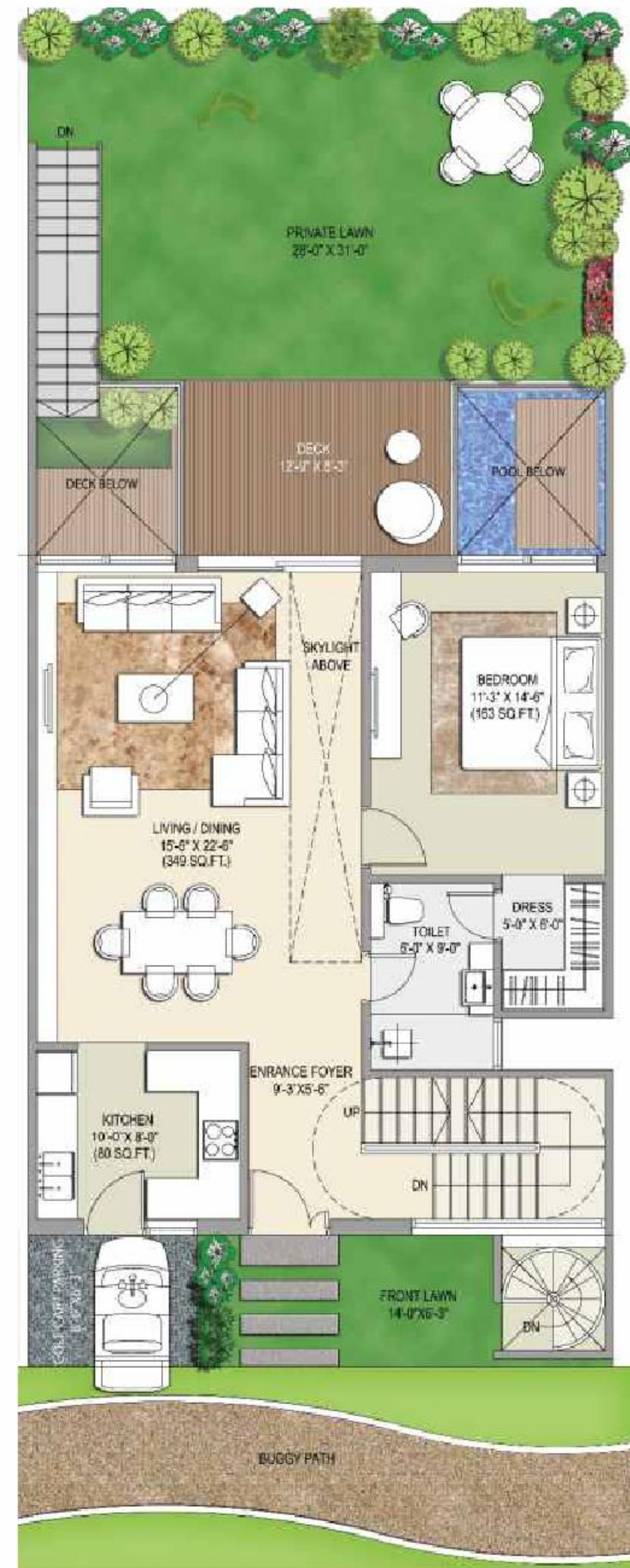
R I S E R E S O R T R E S I D E N C E S



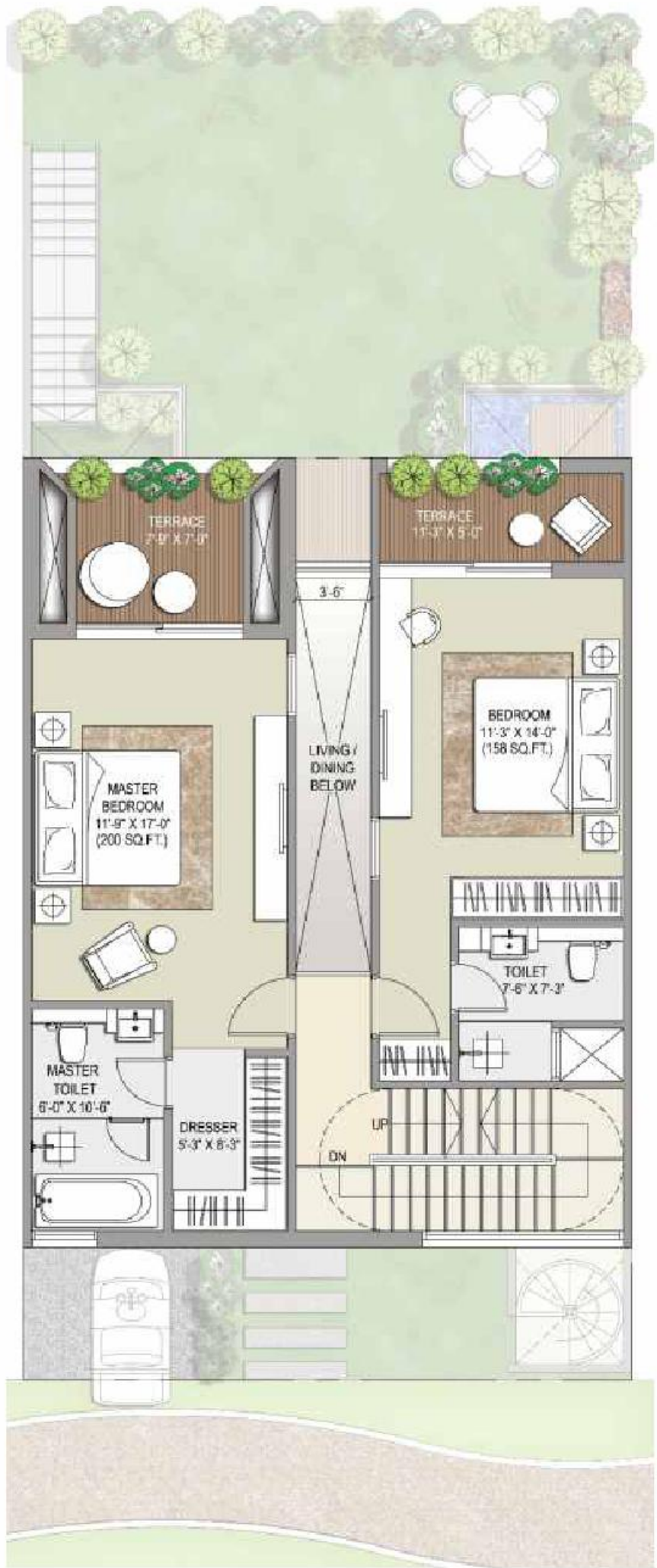
LOWER GROUND FLOOR



UPPER GROUND FLOOR



FIRST FLOOR



TERRACE FLOOR



ROOF PLAN

